



**THE EUROPEAN
AESTHETIC GUIDE**
September 2016



THE European The Leading Aesthetic Practice Resource™
AESTHETIC
GUIDE™

Neurotoxin Obtains Key Regulatory Approval from European Authorities

Competition is fierce when the current neurotoxin market leader is an industry giant whose name is synonymous with its specific treatment, making the prospect of marketing your own alternative product seem daunting. However, one established manufacturer has never shied away from the challenge. While the company introduced the third injectable neurotoxin to market, through patience and persistence it has achieved the first ever European approval for the combined treatment of upper facial lines.

continued on page 3

**Non-Surgical Body Shaping
Evolution of Thread Lifts
IMCAS 2017 Preview**

Autumn 2016
Circulation 25,000
www.miinews.com



EVA Feminine Rejuvenation Device

Features Novel RF Technology



Franco Vicariotto, M.D.
Department of Vulvovaginal Diseases
Buzzi Hospital, University of Milan
Milan, Italy

By Jeffrey Frentzen, Executive Editor

As an innovative energy-based device for performing vaginal rejuvenation, EVA™ from Novavision Group SpA (Milan, Italy), represents an advanced medical solution for feminine intimate care. This system employs a proprietary version of radiofrequency (RF) to address vaginal atrophy and laxity, external vulvar rejuvenation, genitourinary syndrome of menopause (GSM) and mild stress urinary incontinence (SUI).

According to Franco Vicariotto, M.D., a gynecologist in the department of vulvovaginal diseases at Buzzi Hospital, the University of Milan, Italy, the EVA device safely and comfortably treats vaginal pathologies. "Patients are asking more and more for solutions to these kinds of conditions. For physicians, we appreciate that the EVA procedure is effective, painless for the patient, and a safe technology."

This non-ablative system uses a series of four software-controlled electrodes that dynamically circulate RF energy to focus selectively on target tissue layers, leaving the surrounding areas unaltered. In Dr. Vicariotto's practice, patients have reported an improvement in laxity, as well as reduction in vulvovaginal atrophy and GSM symptoms, such as dryness, dyspareunia and atrophic vaginitis.

Two proprietary technologies are employed to make EVA safer for patients and easy to use for practitioners: Vaginal Dynamic Radiofrequency™ (VDR™) and Radiofrequency Safety System™ (RSS™). VDR is based on Dynamic Quadripolar energy emission, which uses a self-guided system to concentrate its action on vaginal tissue. This approach significantly reduces EVA's power usage compared with traditional RF-based devices, and eliminates any risk of burns.

RSS technology enables the operator to use VDR's full potential in a harmless, controlled way. For instance, the EVA applicator's electrodes constantly monitor the temperature simultaneously at four different points. "The movement sensor and temperature detectors are continually monitoring the way in which you perform the procedure," said Dr. Vicariotto. "The operator can always check the display to determine when they've reached the desired temperature."

Following the application of Dynamic Quadripolar RF-based energy, the EVA procedure initiates a collagen response with tissue remodeling and the activation of fibroblasts. After a cycle of five sessions in which no anesthesia is needed, results can also include improvement in the firmness of the genital tissue, as well as enhanced intimate satisfaction.

Patient approval is quite high, noted Dr. Vicariotto. "They are satisfied with the comfortable procedure and also happy because there is no downtime and they don't have to stop their daily activities, such as exercise, after treatment. A great number of them reported improvement in their condition, in particular regarding vaginal dryness, after just the first application. Another positive was that they needed only a handful of sessions to see good results."

Dr. Vicariotto has noticed an increasing number of people willing to ask for feminine rejuvenation procedures. "More and more women are considering their overall well-being during the different periods of their lives. In our society, there is also a growing number of menopausal women that want to maintain an active lifestyle. They want solutions to protect and improve their quality of life," he expressed.

"Patients are satisfied with the comfortable procedure and also happy because there is no downtime and they don't have to stop their daily activities, such as exercise, after treatment."



Before treatment



After one EVA treatment
Photos courtesy of Franco Vicariotto, M.D.



EVA™
enhancer of vaginal anatomy



The solution for feminine intimate care

Comfortable and effective
PATENTED VAGINAL RADIOFREQUENCY to treat:

- VVA (VULVO-VAGINAL ATROPHY)
- LAXITY OF THE VAGINAL INTROITUS
- MILD S.U.I. (STRESS URINARY INCONTINENCE)
- VULVODYNIA
- VULVAR REJUVENATION

- VAGINAL DYNAMIC QUADRIPOLE RADIOFREQUENCY TECHNOLOGY (VDR™)
- MOVEMENT SENSOR
- 4 TEMPERATURE DETECTORS
- ZERO DOWNTIME IN-OUT PROCEDURES
- PAINLESS, NO ANESTHESIA
- IoMT TECHNOLOGY



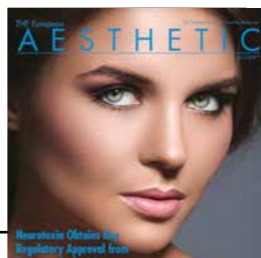
MADE IN ITALY

NOVA CLINICAL
advanced medical device applications

www.novaclinical.it



NOVA CLINICAL a division of NOVAVISION GROUP S.p.A.
Phone: +39 02 96720240 - www.novavision.it - info@novavision.it



Energy-Based Body Shaping Fulfills Patient Demand



Cellulite before and after three Thermi250 treatments
Photos courtesy of Barry DiBernardo, M.D.



Before and after Novaestetyl Radio4 Lift-Shape treatment
Photos courtesy of Novavision Group



Before and after DEKA TriActive+ treatment
Photos courtesy of P. Gilardino, M.D. and A. Peleci

The company's newest face modality, Total Tip 3.0, delivers up to two times maximum bulk heating across the complete tissue volume in the treatment area, resulting in more efficient collagen remodeling outcomes. In addition, Thermage can be used in conjunction with liposuction to address skin laxity and counter surgical side effects, such as an uneven skin surface.

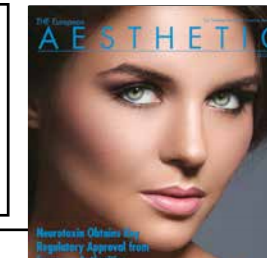
Newer "hybrid" RF-based devices are emerging as well. BTL Industries (Lyme, Staffordshire, U.K. and Framingham, Massachusetts, U.S.) offers a portfolio of non-invasive aesthetic devices that include combinations of RF, including Selective RF™ and ultrasound. The BTL Vanquish ME™ non-invasive platform utilizes Selective RF and features a non-contact applicator that is positioned over the body area to induce apoptosis in the fat layers. It can treat the entire abdomen from flank to flank. The BTL Exilis Elite™, with its monopolar RF and unique cooling system, allows for deeper and more comfortable delivery of thermal energy, yielding better contouring outcomes versus bipolar RF devices. The dual handpiece achieves effective skin tightening on the face, as well as body contouring. It is used along with BTL Vanquish ME in order to treat large zones. BTL Vanquish ME and BTL Exilis Elite offer safe, no downtime, non-surgical skin tightening and body shaping procedures that are easy to perform.

Employing three different handpieces for the treatment of various body regions, PowerShape2 from Eunsung Global Corp. (Seoul, South Korea), is a non-invasive system that combines bipolar RF, low-level laser and vacuum in a safe and convenient treatment. RF delivers thermal energy deep into dermal layers where these applied electromagnetic waves encourage biological processes, while low-level laser energy helps increase blood circulation and promote metabolism. The vacuum massage effect alleviates minor muscle pain.

ThermiSmooth® Body from Thermi, LLC, an Almirall Company (Irving, Texas, U.S.), targets areas under the skin, providing a rejuvenating effect via collagen remodeling and a temporary reduction of cellulite. ThermiSmooth Body is performed using the Thermi250™ device, a powerful, temperature-controlled RF-based platform designed to target cellulite while simultaneously relieving pain, muscle spasms and increasing local circulation. ThermiSmooth Body applications are performed over a period of six to eight weeks.

Novaestetyl, a Novavision Group S.p.a. company (Milan, Italy), has released the Radio4 Lift-Shape System, which utilizes Dynamic Quadripolar RF. Working with proprietary Variable RF (VRF™) and RF Safety System (RSS™) technologies, Dynamic Quadripolar RF allows penetration of energy that is optimized for the target tissue, ensuring favorable results while using extremely low energy levels. In this manner it can treat all skin layers from the epidermis through the dermis to the deep hypodermis. In addition to treating loose skin, cellulite and localized fat, the device works on scar reduction, stretch marks, acne, wrinkles and dyschromias.

Joining three energy-based technologies into a single device, TriActive+ from DEKA (Calenzano, Florence, Italy) uses RF, ultrasound



PRODUCT PROFILES



PicoWay

PicoWay – now with Resolve – is a dual wavelength (532 nm and 1064 nm) picosecond system with both non-fractional and fractional capabilities, treating a wide-range of pigmented lesions and tattoos. PicoWay's unique mode of action is based on delivering ultrashort picosecond pulses of energy to the tissue. These bursts of energy create a photoacoustic impact, which breaks up the pigmentation into smaller, more easily eliminated particles.

Syneron and Candela: +34 916 56 8563
or visit www.syneron-candela.es



PROFHILO's
IBSA's patented BDDE-free thermally stabilized hybrid cooperative complex is made up of 64 mg high and low molecular weight Ultrapure hyaluronic acid (HA) in a 2 mL syringe. Studies have shown optimum results in the malar / submalar areas for remodeling skin laxity using the BAP technique with just five injection points on each side of the face. PROFHILO's high spreadability and cohesiveness have also proven very effective in areas difficult to treat with fillers alone such as the forehead, hands and neck.

IBSA Farmaceutici Italia S.r.l.: +39 0371 617 292 or info@ibsaderma.com
or visit www.ibsaderma.com



Lifting Threads

Croma-Pharma offers two brands of lifting threads: LFL PDO from Grand Aespio and HAPPY LIFT from Promitalia. Known for safety and biocompatibility, PDO absorbable threads speed up the process of neocollagenesis. As well, the subsequent stimulation of fibroblasts results in further synthesis of elastin. PDO can achieve the following outcomes: elimination of fine wrinkles; smoothing of deep wrinkles; improvement of skin tone, elasticity and texture; and prevention of tissue sagging, with very short downtimes and no visible scars.

Croma-Pharma GmbH: +43 2262 684 68 0 or visit www.princess-lift.com



sonoQueen

sonoQueen™ delivers micro-focused ultrasound and makes thermal coagulation points (TCPs) in the dermal and SMAS layers in a non-invasive way using High Intensity Focused Ultrasound (HIFU) technology for face-lifting, skin tightening and body shaping. Unlike other HIFU systems, sonoQueen has long-endurability and cost-effective consumables, and it provides immediate and dependable results via a painless treatment using a high purity transducer.

Newpong Co., Ltd.: +82 2 541 0145 or visit www.newpong.com



EVA

Enhancer of Vaginal Anatomy (EVA) represents an innovative, effective and advanced medical solution for feminine intimate care with a special focus on vaginal atrophy, laxity of the vaginal introitus, mild stress urinary incontinence (SUI), vulvodynia and vulvar rejuvenation. Thanks to the patented Vaginal Dynamic Quadripolar Radiofrequency™ (VDR™) and Radiofrequency Safety System™ (RSS™) technologies, it allows effective, safe and comfortable vaginal and vulvar treatments. Designed and manufactured in Italy, EVA also features the IoMT (Internet of Medical Things) technology.

NOVAVISION Group SPA:
+ 39 02 96720240 or visit
www.novaclinical.net / www.novavision.net



Easy Droxy Complex Peel & Neutralizer Versicolor

The Easy Droxy Complex Peel & Neutralizer Versicolor kit provides more than five safe and efficacious treatments. This new system combines A/BHA and a special neutralizer emulsion. Easy Droxy Complex Peel helps rejuvenate and hydrate skin and stimulate regeneration. Neutralizer Versicolor provides visual control of efficacy and uniformity of chemical peel neutralization by a modification of color that limits the risks of non uniform-neutralization and potential burning. Neutralizer Versicolor provides calming and moisturizing effects and is recommended for immediate application after A/BHA solutions and gel peels.

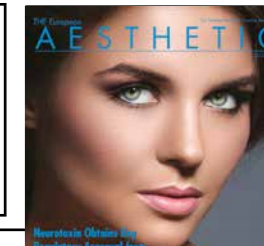
Skin Tech Pharma Group S.L.: +34 972 455113 or visit www.skintechpharmagroup.com



VASCULAR TECHNOLOGY COMPARISON CHART

Supplier Product Name	Device Type	Wavelength (nm)	Energy Output (Joules)	Pulse Length	Accessories
Candela					
Vbeam Perfecta	Pulsed Dye Laser	595 nm	Up to 40 J/cm²	0.45 – 40 ms	Eight spot sizes up to 12 mm, including 3 x 10 elliptical and pigmented lesion handpieces. Unique, patented Dynamic Cooling Device maximizes patient comfort and Tx efficacy. 1.5 – 24 mm spot sizes. Unique, patented Dynamic Cooling Device maximizes patient comfort and Tx efficacy. Air Cooling Compatible delivery systems available.
GentleMAX Pro	Long Pulse Alexandrite / Nd:YAG	755 nm / 1064 nm	Up to 520 J/cm²	0.25 – 100 ms	Same as above.
GentleLase Pro-U	Long Pulse Alexandrite (upgradable to GentleMAX Pro)	755 nm	Up to 520 J/cm²	0.25 – 100 ms	Same as above.
GentleYAG Pro-U	Long Pulse Nd:YAG (upgradable to GentleMAX Pro)	1064 nm	Up to 520 J/cm²	0.25 – 100 ms	Same as above.
Cynosure, Inc.					
Icon 1064+ handpiece MaxG handpiece	Nd:YAG Optimized Light	1064 nm 500 – 670 nm, 870 – 1200 nm	Up to 700 J/cm² Up to 80 J/cm²	10 – 100 ms 1 – 100 ms	Four spot sizes: 1.5, 3, 6 and 10 mm. Advanced contact cooling and dual filters minimize unnecessary epidermal exposure for enhanced patient comfort. MultiLite handpieces converting to 585 and 650 nm wavelengths; additional MultiSpot handpiece offering 2 - 8 mm spot sizes.
RevLite SI	Nd:YAG	1064 nm, 532 nm, 585 nm, 650 nm	Up to 30 J/cm²	5 – 20 ns	Same as above.
MedLite C6	Nd:YAG	1064 nm, 532 nm, 585 nm, 650 nm	Up to 12 J/cm²	5 – 20 ns	Same as above.
Cynergy with Multiplex	Pulsed Dye / Nd:YAG / Multiplex	585 nm / 1064 nm / Multiplex	Up to 600 J/cm²	0.3 – 300 ms	PDL, Nd:YAG and patented MultiPlex technology offer superior vessel clearance at lower fluences. Spot sizes range from 1.5 – 15 mm. Compatible with SmartCool air cooling.
Elite MPX	Multi-Wavelength Aesthetic Platform	755 nm, 1064 nm, Multiplex, IPL	Up to 600 J/cm²	0.5 – 300 ms	High powered Nd:YAG and Alexandrite with spot sizes ranging from 1.5 – 24 mm. Patented MultiPlex technology blends wavelengths for superior results. Integrated IPL (530, 560, 590 nm) and Zimmer cooling system.
Elite+	Alexandrite / Nd:YAG	755 nm / 1064 nm	Up to 600 J/cm²	0.4 – 300 ms	High powered Nd:YAG and Alexandrite with spot sizes ranging from 1.5 – 24 mm. Compatible with SmartCool air cooling system.
Elite	Alexandrite / Nd:YAG	755 nm / 1064 nm	Up to 600 J/cm²	0.4 – 300 ms	High powered Nd:YAG and Alexandrite with spot sizes ranging from 1.5 – 15 mm. Compatible with SmartCool air cooling.
Acclaim	Nd:YAG	1064 nm	Up to 600 J/cm²	0.5 – 300 ms	High powered Nd:YAG with spot sizes ranging from 1.5 – 15 mm. Compatible with SmartCool air cooling. Upgradable to Elite dual wavelength system.
DEKA					
Synchro VAS-Q	Multi-Functional Platform	595 nm PDL / RightLight Technology	8 J / 33 J/cm²	From 0.5 – 40 ms	Powerful PDL with RightLight Technology. Eliminates all vascular anomalies, malformations and superficial erythrosis. Four handpieces (5, 7, 10 and 12 mm) with Auto Spot Size Recognition. Top Hat technology and high energy modality up to 7 J, delivery pulse settings available.
PhotoSilk PLUS	Multi-Application System	1064 nm Nd:YAG / 2940 nm Er:YAG / UPL (pulsed light)	20 – 225 J/cm² / 2.4 – 15 J/cm² / 4 – 32 J/cm²	Up to 6.6 ms, 25 ms / 600 – 1,000 µs / 2.5 – 3 ms (1 – 3 pulses)	Medical grade UPL technology; up to six UPL handpieces, 60,000 pulses guaranteed. Large Tx area: 8.3 cm² and two laser handpieces (Er:YAG and Nd:YAG) with 2.5 and 4.0 mm spot sizes.
Synchro HP Excellium	Multi-Functional Platform	1064 nm Nd:YAG / 500 nm, 520 nm, 550 nm, 600 nm, 650 nm IPL	LP 120 J – 180 W (max.), SP 120 J (max.) / 160 J (max.) energy per pulse	2 – 50 ms SP 0.2 – 10 ms LP / 3 – 8 ms	180 W Nd:YAG laser module with up to 27,000 W pulse peak power; three delivery pulse designs; 11 application handpieces (22 mm and 24 mm available) and optional five filter IPL with enhanced vascular capabilities 500G. Auto Spot Size Recognition system. Top Hat technology; contact or optional external cooling connections; patient database and protocols; no disposables. Nd:YAG and IPL, platform with five application specific handpieces. Top Hat technology and Auto Spot Size Recognition; contact or optional external cooling connections; delivery pulse settings available; patient database and protocols. IPL: five optional filters, 30,000 shots guaranteed. No disposables.
Synchro FT	Multi-Functional Platform	1064 nm Nd:YAG / 500 nm, 520 nm, 550 nm, 600 nm, 650 nm IPL	700 J/cm² (max.) SP and LP / 160 J (max.) energy/pulse	0.8 – 10 ms SP; 2 – 30 ms LP (1 – 3 pulses) / 3 – 8 ms	Interchangeable snap-on filters; integrated contact cooling; lamp water cooling. Transportable: 3.1 cm² or 6.2 cm² spot area available. IR Filter for greater skin tightening.
MiniSilk FT	Pulsed Light System	500 nm, 520 nm, 550 nm, 600 nm, 650 nm, IR Filter	2 – 2.5 J/cm²	2 – 85 ms (1 – 3 pulses)	3 Hz and high power (125 W) on Alexandrite emission. 150 W Nd:YAG module with up to 27,000 W pulse peak power. Three delivery pulse designs and adjustment feature for Alexandrite and Nd:YAG. Twelve application handpieces up to 24 mm. Auto Spot Size Recognition. Top Hat technology; contact or optional external cooling connections; patient database and protocols. IPL: five optional filters with enhanced vascular capabilities 500G. No disposables.
Synchro REPLA-Y	Multi-Functional Platform	755 nm Alexandrite / 1064 nm Nd:YAG / 500 nm, 520 nm, 550 nm, 600 nm, 650 nm IPL	63.5 J (max.) – 125 W (max.) / 120 J – 180 W (max.) LP / 120 J (max.) SP / 160 J (max.) energy/pulse	2 – 60 ms (single pulse); 2 – 40 ms (double pulse) / 2 – 50 ms SP; 0.2 – 12 ms LP / 3 – 8 ms	3 Hz and high power (125 W) on Alexandrite emission. 150 W Nd:YAG module with up to 27,000 W pulse peak power. Three delivery pulse designs and adjustment feature for Alexandrite and Nd:YAG. Twelve application handpieces up to 24 mm. Auto Spot Size Recognition. Top Hat technology; contact or optional external cooling connections; patient database and protocols. IPL: five optional filters with enhanced vascular capabilities 500G. No disposables.
Ellipse A/S					
Nordlys	Multi-Technology Platform	530 – 750 nm, 555 – 950 nm, 1064 nm	Up to 26 J; up to 450 J	0.5 – 100 ms	PR 530-750 and VL 555-950 applicators enable treatment of smaller red vessels and deeper larger blue vessels. Both are available as a 48 mm x 10 mm and a 98 mm² hexagonal small spot for individual lesions. All systems include patient database. Ellipse IPL+, MultiFlex+ and Nordlys include an expert mode allowing users to adjust pulse length. Ellipse MultiFlex+ and Nordlys also include a 1064 nm Nd:YAG with built-in Soft Cool technology and automatic spot size adjustment. Additionally, Nordlys can deliver short powerful SWT pulses from 0.5 ms.
Ellipse MultiFlex+	Multi-Technology Platform	530 – 750 nm, 555 – 950 nm / 1064 nm	Up to 26 J/cm² / up to 450 J/cm²	Up to 100 ms (adj.) (programmable) / up to 15 ms	
Sirius	Selective Waveband Technology	530 – 750 nm, 555 – 950 nm	Up to 19 J/cm²	Up to 100 ms (programmable) / up to 15 ms	
Ellipse IPL+	Selective Waveband Technology	530 – 750 nm, 555 – 950 nm	Up to 26 J/cm²	Up to 100 ms (programmable) / up to 15 ms	
Ellipse Light SPT+	Selective Waveband Technology	555 – 950 nm	Up to 19 J/cm²	Up to 100 ms (programmable) / up to 15 ms	
Eunsung Global Corp.					
Clearlight	Intense Pulsed Light	430 – 1200 nm	3 – 35 J/cm²	5 – 25 ms	Differentiated handpiece of 15 x 40 mm wide spot size.
Fotona d.o.o.					
SP Dynamis	Nd:YAG	1064 nm	Up to 600 J/cm²	0.1 – 50 ms	S-11; Nd:YAG scanner; 42 cm² Tx area. Nd:YAG handpieces: 2 - 20 mm spot sizes.
XP-2 Focus XP MAX	Nd:YAG	1064 nm	Up to 300 J/cm² Up to 600 J/cm²	0.1 – 50 ms 0.1 – 300 ms	Nd:YAG handpieces: 2 - 10 mm spot sizes. S-11; Nd:YAG scanner; 42 cm² Tx area. Nd:YAG handpieces: 2 - 20 mm spot sizes.
QX MAX	Nd:YAG Q-Switched / Long Pulse	1064 nm	Up to 160 J/cm²	250 µs	Handpieces: 2 - 8 mm spot sizes.

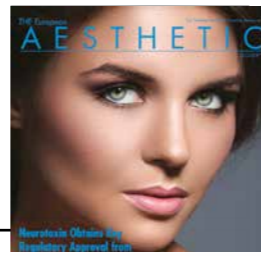
Note: Data subject to change; please refer to Company Directory for supplier contact information.



VASCULAR TECHNOLOGY COMPARISON CHART

Supplier Product Name	Device Type	Wavelength (nm)	Energy Output (Joules)	Pulse Length	Accessories
General Project					
Med Flash II CS	Intense Pulsed Light	520 – 1200 nm	Up to 600 J at lamp level	Single pulse 25 – 75 ms, pulsed mode 1.5 – 12.5 ms (duration), 5 – 100 ms (interval)	Handpiece with integrated skin cooling. Spot sizes: 50 x 25 mm, 35 x 15 mm and 15 x 15 mm.
Laser Touch	Multiple Laser Platform	Nd:YAG 1064 nm	18 J	Width: 3-10 ms	Spot sizes: 1.5, 3, 5, 8, 5 - 12 mm, fractional tip.
Ilooda Co., Ltd.					
Multiple IRIS	OPS Diode Laser	532 nm (Fractional); 532 nm (Normal) N/A	70.7 J/cm²; 832 J/cm²	100 ms; 400 ms	532 nm Fractional, 532 nm Normal; available to treat vascular lesions in the epidermis.
Secret RF	RF Microneedle		25 W	50 – 950 ms	25 pin sterilized RF bipolar tips (optional 64 insulated pin available); monopolar handpiece for small Tx areas, such as around the eyes; optional smart pen handpiece for acne and thread vein.
LINLINE Medical Systems SAS					
MULTILINE	Nd:YAP / Q-Switched / KTP	1079 nm / 540 nm	0.1 – 250 J/cm²	5 ns – 5 ms	Spot sizes: 3, 4, 8 mm. Touch screen monitor. Non-thermal laser impact eliminates cooling feature. Unique laser system with integrated universal power and control system featuring interchangeable compact laser emitters.
Lumenis					
M22	Intense Pulsed Light / Nd:YAG / ResurFX	515 – 1200 nm / 1064 nm / 1565 nm	10 – 35 J/cm² / 20 – 225 J/cm² / 10 – 70 mJ/cm²	4 – 20 ms / 2 – 20 ms	Multi-technology, multi-application platform. Upgradable, expandable, 6 IPL filters, novel OPT, optimized presets, spot sizes: 15 x 35 mm and 8 x 15 mm (IPL), 2 x 4, 6 mm (Nd:YAG), 1565 nm fiber laser.
Novastetic, Novaclical (divisions of Novavisio Group)					
PLW IFL	Incoherent Fast Light	400 – 950 nm	Up to 100 J	20 – 40 ms	Interchangeable filters: 400 nm, 520 nm, 550 nm, 600 nm, 650 nm and 720 nm; biocompatible disposable filters: Suberbust: single, repetition, IFL modes.
Quanta System					
Light B EVO	Nd:YAG	1064 nm, 1320 nm	Up to 500 J/cm², up to 35 J/cm²	0.3 – 300 ms, 5 – 10 ms	Contact skin cooling or cryo air system integrated with handpiece (not for Q-switched modules). Alexandrite 755 nm spot sizes: up to 16 mm; rep. rate up to 10 Hz. Pulsed Nd:YAG 1064 nm spot sizes: up to 14 mm; rep. rate up to 10 Hz. Nd:YAG 1320 nm (optional) spot sizes: up to 8 mm; rep. rate up to 5 Hz. Q-switched Nd:YAG 532 nm and 1064 nm with OptiBeam II handpieces for squared, rounded and fractional spot sizes up to 8 mm; rep. rate up to 10 Hz. TWAIN options available.
Light C EVO	Nd:YAG / KTP Nd:YAG	1064 nm, 1320 nm / 532 nm	Up to 500 J/cm², up to 35 J/cm² / up to 90 J/cm²	0.3 – 300 ms, 5 – 10 ms / 2 – 50 ms	See above.
Light A Star EVO Light 4V EVO	Light A + Light B Light A + Light C	755 nm, 1064 nm, 1320 nm 532 nm, 755 nm, 1064 nm, 1320 nm	Up to 500 J/cm², up to 37 J/cm² (ns), 50 J/cm² (µs) / up to 15 J/cm²	0.3 – 300 ms, 5 – 10 ms / 6 ns, 6+6 ns, 300 µs / 6 ns, 6+6 ns	See above.
Q-Plus Star 1 EVO	Nd:YAG / Nd:YAG Q-Switch / KTP Nd:YAG Q-Switch	1064 nm, 1320 nm / 1064 nm / 532 nm	Up to 500 J/cm², up to 37 J/cm² (ns), 50 J/cm² (µs) / up to 15 J/cm²	0.3 – 300 ms, 5 – 10 ms / 6 ns, 6+6 ns, 300 µs / 6 ns, 6+6 ns	See above.
Ultraight EVO	Nd:YAG F.D. / Nd:YAG / Nd:YAG Q-Switch / KTP Nd:YAG Q-Switch	534 nm / 1064 nm / 1064 nm / 532 nm	Up to 95 J/cm² / up to 500 J/cm² / up to 37 J/cm² (ns), 50 J/cm² (µs) / up to 15 J/cm²	2 – 50 ms / 0.3 – 300 ms / 6 ns, 6+6 ns, 300 µs / 6 ns, 6+6 ns	See above.
Duetto MT EVO	Alexandrite / Nd:YAG	755 nm / 1064 nm	Up to 120 J/cm² / up to 500 J/cm²	0.3 – 300 ms	Exclusive Mixed Technology allows delivery of both wavelengths simultaneously or sequentially. Mixed mode spot size up to 18 mm. Twin IPL and Twin 2940 nm options available. Rep. rate up to 10 Hz. Contact skin cooling or cryo air system integrated with handpiece. IPL handpieces available at 400 – 1200 nm, 550 – 950 nm, 570 – 1200 nm, 590 – 1200 nm, 625 – 1200 nm and 650 – 1200 nm. Skin Cooling. Spot sizes: 48 x 13 or 25 x 13 mm.
TWAIN IPL option	Pulsed Light	550 – 950 nm	Up to 25 J/cm²	3 – 240 ms	Same as above.
Eterna Giovinezza Plus	Pulsed Light	550 – 950 nm, 625 – 1200 nm	Up to 30 J/cm²	3 – 240 ms	Spot sizes 0.5, 1, 1.5, 3 mm. Bare fibers, endovenous kits and teeth bleaching handpiece available.
New Silk Light (table top) Quanta A, B or C	Pulsed Light Diode	550 – 950 nm A: 808 nm, B: 940 nm, C: 980 nm	Up to 30 J/cm² 25 W	3 – 240 ms or CW	See above.
Quanta D Quanta Star	LBO LBO / Diode	532 nm 532 / 808 nm, 940 nm, 980 nm	5 W, 8 W 5 W / 25 W	3 – 2,500 ms or CW	See above.
585	D-wmops	585 nm	5 W	1 – 2,500 ms or CW	Solid state laser with no consumables. Spot sizes: 0.5 mm, 1 mm, 1.5 mm, 3 mm; scanner (optional) with max. scanning area of 1.8 x 1.8 cm.
Sciton					
JOULE	Laser and Light Platform	Various	Up to 400 J/cm²	0.1 – 200 ms, 1 – 10 sec	Configurable up to ten modules.
ClearScan YAG ClearScan ALX Pro-V	Nd:YAG Alexandrite Nd:YAG	1064 nm 755 nm 1319 nm	Up to 400 J/cm² Up to 400 J/cm² Up to 50 Watts	Up to 200 ms Up to 200 ms N/A	Computerized scanner; 30 x 30 mm Tx; integrated cooling. Same as above.
BBLs	BroadBand Light	420 – 1400 nm	Up to 30 J/cm²	Up to 200 ms	Endovenous and transcutaneous laser Tx of varicose and other veins. Uses non-proprietary fibers.
BBL	BroadBand Light	420 – 1400 nm	Up to 30 J/cm²	Up to 200 ms	Table top system, SkinTite II, 420, 515, 560, 590, 640, 695 nm filters, 15 x 45 mm and 15 x 15 mm spot sizes, integrated cooling.
Forever Bare BBL	BroadBand Light	420 – 1400 nm	Up to 30 J/cm²	Up to 200 ms	SkinTite II, 420, 515, 560, 590, 640, 695 nm filters, 15 x 45 mm and 15 x 15 mm spot sizes, integrated cooling. FB BBL technology is in motion. SkinTite II, 420, 515, 560, 590, 640, 695 nm filters, 15 x 45 mm and 15 x 15 mm spot sizes, integrated cooling.
Syneron					
elOs Plus / eMax/eLight SR	Optical Energy / RF Electrical Energy	580 – 980 nm	Up to 45 J/cm² / up to 25 J/cm²	N/A	25 x 12 mm spot size.
elOs Plus / eMax/eLight SRA	Optical Energy / RF Electrical Energy	470 – 980 nm	Up to 45 J/cm² / up to 25 J/cm²	N/A	Same as above.
elOs Plus / eMax/eLaser LV	Diode / RF Electrical Energy	900 nm	Up to 140 J/cm² / up to 100 J/cm²	N/A	8 x 5 mm spot size.
elOs Plus / eMax/eLaser LVA	Diode / RF Electrical Energy	900 nm	100 – 350 J/cm² / 10 – 100 J/cm²	N/A	8 x 2 mm spot size.

Note: Data subject to change; please refer to Company Directory for supplier contact information.

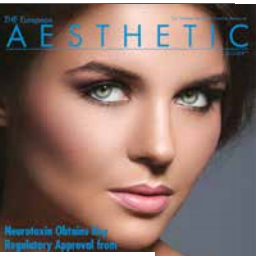


BODY SHAPING TECHNOLOGIES COMPARISON CHART

Manufacturer	Device	Energy Source	Mechanism of Action	Regulatory Status (Europe and USA)
BTL Industries	BTL EXILIS ELITE	Focused RF with Deep Cooling	Proprietary Impedance Intelligence handpiece and Energy Flow Control system prevent sparking or tissue burn. Specially designed tip continuously measures skin's impedance and maintains power for maximum delivery of thermal effect to tissues.	CE cleared. FDA cleared. Health Canada cleared. KFDA cleared.
	BTL VANQUISH ME	Selective RF	Non-contact device for fat and circumferential reduction of the abdomen and legs. Patented, non-contact selective RF melts fat away, providing unsurpassed patient comfort and no costly consumables.	CE cleared. FDA cleared. Health Canada cleared. KFDA cleared.
Cynosure, Inc.	Smartlipo Triplex	Laser Lipolysis Platform	ThermaGuide temperature sensing cannula and SmartSense accelerometer distribute energy uniformly and monitor subdermal tissue temperature for safer, more effective subdermal energy application. 1064 nm, 1320 nm and 1440 nm wavelengths target fat, coagulate vessels and deliver tissue retraction. MultiPlex Technology enables blending of two of the three wavelengths. Addition of 1440 nm offers more efficient photomechanical destruction of fat cells, coagulation of small blood vessels and tissue retraction.	CE cleared. FDA cleared.
	Cellulaze	Cellulite Laser Platform	SideLaze3D side-firing fiber and ThermaGuide thermal sensing cannula. Targeted 1440 nm wavelength addresses three structural defects of cellulite below the dermis: bulges of fat, fibrous septae and skin irregularities. This minimally invasive surgical procedure provides long lasting and clinically significant improvements in the appearance of cellulite up to three years.	CE cleared. FDA cleared.
	PrecisionTx	Small Area Laser Lipolysis and Hyperhidrosis Treatment	ThermaGuide temperature sensing cannula; 1440 nm wavelength; SideLaze600 side-firing fiber treats small areas of fat and underneath the dermis to increase collagen production and skin thickness. Treatment of primary axillary hyperhidrosis through the ablation of the axillary glands under the arm.	CE cleared. FDA cleared.
	PelleFirm RF Body Treatment	Pellevé SS RF Generator (4MHz)	RF monopolar tissue heating with integrated massage head for temporary reduction in the appearance of cellulite.	CE cleared. FDA cleared.
	SculpSure	Non-Invasive Laser Lipolysis (1064 nm Diode)	The 1064 nm wavelength's specific affinity for adipose tissue, coupled with minimal absorption in the dermis, efficiently and non-invasively disrupts fat cells in 25 minutes. Over time, the body naturally eliminates the disrupted fat cells with results seen in 6 to 12 weeks.	CE cleared. FDA cleared. Health Canada cleared. KFDA cleared.
DEKA	SmartLipo 6 SmartLipo 10 SmartLipo 18	1064 nm Nd:YAG Laser	Customized μ Pulsed Nd:YAG wavelength providing physiological contractions and elimination of fat with no inflammatory effects. Controlled photomechanical effect, photo-coagulative action and photo-stimulative course for immediate skin tightening due to flexible pulse design.	CE cleared. FDA cleared.
	Triactive+	Diode Laser plus Vacuum Massage and Skin Cooling. Ultrasound: RF with / without Vacuum Massage and Skin Cooling	Platform includes all available technologies for optimal body shaping. Face and body dermodynamic diode laser handpiece with cooling and vacuum. High and low frequency ultrasound; bipolar and multipolar RF application. Graphic tutorial with auto selection of parameters and proper handpiece. Store end user's protocols.	CE cleared.
Eunsung Global Corp.	Cool Max	Cooling Lipolysis	Non-invasive transcutaneous delivery of cold to selectively and permanently eliminate fat cells.	CE cleared.
	PowerShape2	Multipolar and Bipolar RF, Low Level Laser, Vacuum	Combined bipolar and multipolar RF, vacuum and low level laser achieves powerful results.	CE cleared.
	Cool Shaping	Cooling Lipolysis	Non-invasive technology uses cold exposure to selectively and gradually lead to the reduction of subcutaneous fat.	CE cleared.
	Aurora	Multipolar RF, Vacuum	Multipolar RF energy induces irreversible thermal damage to adipose tissue by creating directionally controlled electrical fields within cutaneous and subcutaneous tissues.	CE cleared.
	3Max Plus	Multipolar and Bipolar RF, Vacuum, Ultrasound Cavitation	Advanced body sculpting system integrates ultrasound cavitation, RF and vacuum technologies.	CE cleared.
	3Max Coolshaping	Cooling Lipolysis, Multipolar RF, Ultrasound Cavitation	Advanced body slimming system integrates cooling lipolysis, ultrasound cavitation and multipolar RF. Effective treatment for fat and cellulite reduction.	CE cleared.
	Well Spa	Vacuum and Mechanical Massage	Special vacuum suction technology physically stimulates deep into the skin. Two rollers pull up the connective tissues to improve skin folds.	CE cleared.
	Magic Pot	Multipolar RF, Vacuum, LED	RF delivers thermal energy into dermal layer and deep fatty layer in combination with strong vacuum suction technology.	CE cleared.
	Magic Polar	Multipolar RF	Applicator delivers RF energy to localized target areas in the dermal and fatty layers.	CE cleared.
	Megason	Ultrasound Cavitation	Non-invasive ultrasound cavitation system delivers energy into the skin without pain.	CE cleared.
Beauty Pot	RF, Ultrasound Cavitation, Low Level Laser, LED	Applicator delivers RF, ultrasound cavitation, LED and low level laser energy to localized target areas in the dermal and fatty layers.	CE cleared.	
Fotona s.o.o.	SP Dynamis XP-2 Focus	Nd:YAG 1064 nm Nd:YAG 1064 nm	Photothermal - heat generated by laser light. Photothermal - heat generated by laser light.	CE cleared. FDA cleared. CE cleared. FDA cleared.
General Project	Med Sculpt	Controlled Elastomassage Vacuum; LED	Ultrasound action plus elastomassage.	CE cleared. FDA cleared.
	Med ² Contour Dual Wide	Double Ultrasound (1 MHz); Elastomeric Membrane Assisted Vacuum Tech	Deep ultrasound action and lymphodrainage.	CE cleared.
	MC1 Plus	Double Ultrasound (1 MHz); Elastomeric Membrane Assisted Vacuum Tech	Deep ultrasound action and lymphodrainage.	CE cleared. FDA cleared.
MC1 Multipower	Double Ultrasound (1 MHz); Sequential Ultrasound (2.5 MHz); RF; Elastomeric Membrane Assisted Vacuum Tech	Multi-technology platform combines deep ultrasound action with RF and lymphodrainage for body shaping and tightening.	CE cleared.	

Note: Data subject to change; please refer to Company Directory for supplier contact information.

Press cutting for the exclusive use Novavision Group SpA, unplayable.

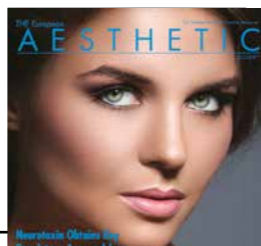


BODY SHAPING TECHNOLOGIES COMPARISON CHART

Manufacturer	Device	Energy Source	Mechanism of Action	Regulatory Status (Europe and USA)
Hironic Co., Ltd.	New MIDAS	Bipolar (RF: 1 MHz / IR: 700 - 2,000 nm), Monopolar (RF 0.5 - 10 MHz)	Heat generated by radiofrequency and infrared.	CE cleared.
	Micoal-A	Cooling Lipolysis	Cooling energy is delivered to the subcutaneous fat layer without any damage to surrounding tissues. Two Cryolipo handpieces can be used simultaneously.	CE cleared.
Newpong Co., Ltd	Liposound	Ultrasound	Based on an ultrasound cavitation effect for minimally invasive lipolysis. Ultrasound energy selectively emulsifies fatty tissue while preserving other connective tissues like nerves and blood vessels. With versatile probes (1.9 - 3.7), this system offers finesse and precise body contouring.	CE cleared. KFDA cleared.
Novaesthetic Novaclinical (division of Novavision Group)	RADIO4 M	Dynamic Quadripolar RF Radial Shock Waves	RADIO4 (Dynamic Quadripolar RF) and VRF (Variable RF) technologies create buffering electrical fields which focus the energy into the specific skin layer heating the tissue. FSS (RF Safety System) technology combines the assisting action of a movement sensor with a pyrometric temperature detector and works as an assistant for the operator, ensuring effectiveness and safety at the same time.	CE cleared.
	BODYKA PLUS	Low Frequency Ultrasonic Wave Sonication combined with Sonophoresis	Sonicphor technology combines low frequency ultrasound sonication, sonophoresis and sonoporation for non-invasive and painless treatment. SCP (Sonication Controlled Program) technology combines functions ensuring effectiveness and safety thanks to the precise movement sensor, multi-temperature sensor, auto-tuning and auto-scanning systems.	CE cleared.
PerfAction Technologies, Ltd.	Enerjet	Pneumatic Energy	Kinetic energy jet reaches up to 6 mm under the skin without needles, each shot covering 1 cm ² of the target area. These nano-bullet particles of healing compounds create controlled micro-trauma sites. As these sites heal, they produce long lasting results for face-lifting, scar repair, stretch mark repair and dermal thickening.	CE cleared. FDA pending.
Quanta System	Da Vinci Lipo	1064 nm and 1320 nm Nd:YAG Laser	Laser-assisted lipolysis and liposuction with the exclusive V shape cannula. Simultaneous dermal tightening.	CE medical cleared.
	Icoone h Icoone Lipo MT	Vacuum Vacuum: 915 nm Laser Diode; 1 W; 650 nm LED; 50 mW	Microcellular stimulation of connective tissue via vacuum massage and light action.	CE medical cleared. CE medical cleared.
Sciton	SkinTyte II ProLipo PLUS	Infrared Light 1319 nm Nd:YAG / 1064 nm Nd:YAG 1319 nm	Deep dermal heating to stimulate new collagen production. Laser-assisted destruction of fat cells and collagen remodeling.	CE cleared. FDA cleared. CE cleared. FDA cleared.
	CelluSmooth		Cutting fibrous septae, emulsifying fat and tightening the dermis to improve the appearance of lumpy and dimpled skin.	CE cleared. FDA cleared.
STORZ MEDICAL AG	CELLACTOR ultra	Combined Focused and Radial Shock Waves	Acoustic Wave Therapy (AWT).	CE cleared.
	D-ACTOR ultra	Radial Shock Waves	AWT.	CE cleared.
Syneron Medical Ltd.	VelaShape III with Guided Mode	Bipolar RF, Infrared Light, Vacuum and Mechanical Massage	Combined energies known as eLis precisely target and heat fatty tissue within Tx area. Vacuum and tissue manipulation events out skin to reveal a smoother, tighter figure.	CE cleared. FDA cleared.
	UltraShape	Focused Ultrasound	Pulsed (non-thermal) focused ultrasound for permanent fat cell destruction.	Configuration used in the U.S. only. FDA cleared.
Thermi	Thermi250	Temperature Controlled RF	Temperature Controlled Radiofrequency for the temporary reduction of cellulite.	FDA cleared.
ZELTIQ Aesthetics	CoolSculpting	Cryolipolysis	Non-invasively reduces fat through exclusively licensed Cryolipolysis-based technology. Cryolipolysis is based on the principle that fat cells are more vulnerable to energy extraction (cooling) than surrounding tissues. A non-invasive applicator is attached to the targeted procedure area to extract energy from the underlying fat tissue, while protecting the skin, nerves, muscles and other tissue. The cooled fat cells undergo apoptosis (controlled cell death) and are gradually eliminated (phagocytosis) reducing the thickness of the fat layer.	CE Mark Class IIA Medical Device. FDA cleared.
Zimmer MedizinSysteme Germany	ZWave	Radial Shockwave	Unfocused low energy radial waves impact collagen structure and the skin's connective tissue, improving blood circulation and metabolism of fat cells. Effective treatment of connective tissue weakness, stretch marks and cellulite.	CE cleared.
	ZWave Pro ZLipo	Radial Shockwave Cryolipolysis	Same as above. Target fat deposits to reduce them permanently and non-invasively. This method cools fat deposits over a period of time to reach a controlled and safe temperature range. Simple, safe and user-friendly.	CE cleared. CE cleared.

Note: Data subject to change; please refer to Company Directory for supplier contact information.

Press cutting for the exclusive use Novavision Group SpA, unplayable.



FRACTIONAL TECHNOLOGIES COMPARISON CHART

Supplier Product Name	Device Type	Wavelength (nm)	Energy Output (Joules)	Pulse Length	Accessories
Cynosure					
Smartskin+	Fractional CO ₂	10,600 nm	30 W	0.2 – 80 ms	Customizable settings for tailored results. Control power, pulse, density and stacking options. Choose from six scan patterns. Scanning handpiece with integrated scan pattern controls. Surgical handpiece included.
Icon 1540 handpiece	Fractional Non-Ablative Laser	1540 nm	Up to 70 mJ per microbeam	10 and 15 ms	XF microlens provides high, non-ablative coverage for fast resurfacing treatments. XD microlens offers greater treatment depth for challenging conditions.
2940 handpiece	Fractional Ablative Laser	2940 nm	3 – 24 mJ	0.25 – 5 ms	
Emerge	Fractional Non-Ablative Laser	1410 nm	10 – 30 mJ/mb	4 – 20 ms	Three light delivery modes: Manual activation for focused Tx areas, AutoStamp for faster treatments and AutoGlide for ease of use and enhanced comfort. Five pre-set parameters for the treatment of pigment, wrinkles or general skin resurfacing. Compact system design to easily store within a practice.
Cortex Resurfacing Work Station	CO ₂ / Er:YAG Laser	10,600 nm / 2940 nm	Up to 40 W / up to 1 J	Adj. to 6 ms / 300 µs	Fractional CO ₂ combined with Er:YAG with 1.5, 3 and 6 mm spot sizes. One year manufacturer warranty.
PicoSure	Alexandrite	755 nm	165 – 200 mJ	550 – 750 ps	Pico-second skin rejuvenation and toning for Tx of acne scars, wrinkles and pigmented lesions. Focus lens array and Pressure Wave Technology uniquely enable impressive results with less fluence, leading to increased patient comfort and minimal downtime.
DEKA					
SmartXide DOT	Fractional CO ₂	10.6 µm	50 W max.	80 – 200 µs	DOT Scanner and freehand handpiece; touchscreen monitor; Stack feature; Smart Track delivery mode; Smart Pulse; patient database; CW, PW, traditional and fractional scanning modes available.
SmartXide ² DOT/RF	Fractional CO ₂ plus RF	10.6 µm	300 W max.	80 – 100 µs	PSD technology with selectable pulse shape (SP, DP, UP, HP, PW, CW, traditional and fractional scanning modes available); DOT/RF Scanner with RF feature; freehand; TFT touchscreen monitor; Stack and Smart Track delivery modes; multimedia built-in training videos, patient database with videos and photos. Store user protocols. Optional diode laser module.
Eunsung Global Corp.					
Duet RF	Bipolar / Monopolar RF	N/A	7 – 50 W	70 – 1,600 ms	Partial handpiece with easy tip replacement. NS, NC, NCE; 64 pin, 100 pin, 196 pin.
Fraction CO ₂	CO ₂	10,600 nm	1 – 300 mJ	0.05 – 15 ms	Specialized handpiece for optimum functionality. Micro spot beam size: more than 70 µm.
Fotona s.o.o.					
SP Dynamis	Nd:YAG / Er:YAG	1064 nm / 2940 nm	Up to 600 J/cm ²	0.1 – 50 ms	F-Runner; fractional Er:YAG scanner: 250 µm spot size, 168 mm ² Tx area. Er:YAG handpieces: 0.25 - 12 mm spot sizes.
XS Dynamis	Er:YAG	2940 nm	Up to 500 J/cm ²	0.1 – 1.5 ms	F-Runner; fractional Er:YAG scanner: 250 µm spot size, 168 mm ² Tx area. Er:YAG handpieces: 0.25 - 12 mm spot sizes.
General Project					
Laser Touch	Multiple Laser Platform Nd:YAG	1320 nm	12 J	Width: 3 – 10 ms	Spot sizes: 3, 6, 9, 5-12 mm, fractional tip.
Med Flash II CS	Intense Pulsed Light	390 – 800 nm	Up to 600 J at lamp level	Single pulse: 25 – 75 ms, pulsed mode: 1.5 – 12.5 ms (duration), 5 – 100 ms (interval)	Handpiece with integrated skin cooling. Partial spectrum lamp. Spot size: 50 x 25 mm.
Hironic Co., Ltd.					
MIXEL	CO ₂ Fractional	10,600 nm	60 mJ	Up to 5,000 µs	Metal tube; scanner type, scan size 2 x 2 to 20 x 20 mm, beam size: 70 µm - 200 µm. Max. spot quantity: 40,000.
Ilooda Co., Ltd.					
Fraxis DUO	CO ₂ Fractional / RF Microneedle	10,600 nm	30 W / 20 W	0.02 – 5 ms / 50 – 950 ms	RF fractional needle handpiece; CO ₂ fractional handpiece; optional surgical handpiece.
Fraxis Secret RF	CO ₂ Fractional RF Microneedle	10,600 nm	30 W	0.02 – 5 ms	CO ₂ fractional handpiece; optional surgical handpiece.
Multiple IRIS	OPS Diode Laser	532 nm (Fractional); 532 nm (Normal)	70.7 J/cm ² ; 832 J/cm ²	100 ms; 400 ms	25 pin sterilized RF bipolar tips (optional 64 insulated pin available); monopolar handpiece for small Tx areas such as around the eyes; optional smart pen handpiece for acne and thread vein. 532 nm Fractional, 532 nm Normal; available to treat vascular lesions in the epidermis.

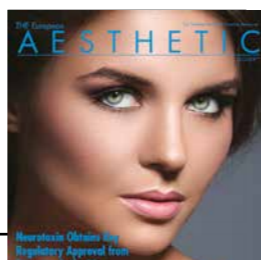
Note: Data subject to change; please refer to Company Directory for supplier contact information.



FRACTIONAL TECHNOLOGIES COMPARISON CHART

Supplier Product Name	Device Type	Wavelength (nm)	Energy Output (Joules)	Pulse Length	Accessories
Lumenis					
UltraPulse ActiveFX	Fractional CO ₂	10,600 nm	1 – 225 mJ	< 1 ms	Single, minimal downtime Tx for wrinkle/pigment results.
UltraPulse DeepFX	Fractional CO ₂	10,600 nm	2.5 – 50 mJ	< 1 ms	Fractional CO ₂ Tx for wrinkles, scars and deep collagen treatment.
UltraPulse TotalFX	Fractional CO ₂	10,600 nm	1 – 225 mJ	< 1 ms	Blended fractional CO ₂ Tx for customized patient outcomes.
AcuPulse MultiMode Superficial	Fractional CO ₂	10,600 nm	50 – 170 mJ	300 µs	Incisional and resurfacing accessories available.
AcuPulse MultiMode Deep	Fractional CO ₂	10,600 nm	5 – 30 mJ	300 µs	Incisional and resurfacing accessories available.
UltraPulse SCAARFX	Fractional CO ₂	10,600 nm	1 – 225 mJ	< 1 ms	Fractional CO ₂ Tx for surgical and acne scars, as well as conspicuous and complex lesions. High energy: 150 mJ/pulse; deep Tx up to 4.0 mm; optimal ablation/coagulation ratio.
Novaesthetic, Novaclinical (divisions of Novaision Group)					
RADIO4M	Patented Dynamic Quadripolar RF, RF Safety System (RSS), Variable RF (VRF), Quadripolar Dynamic Fractional RF (4RFH)	N/A	Up to 55 W	N/A	Movement sensors, pyrometric temperature detectors, four handpieces: small, medium, large and 4RFH technology with 32 golden pins and 384 µNeedles; Biofeedback.
Quanta System					
YouLaser CO ₂	CO ₂	10,600 nm	30 W	0.25 – 20 ms	Scanner area: 2.1 x 2.1 cm (max), 300 µm microspot. Stacking Pulse technologies deliver short and repeated pulses. Various surgical handpieces available.
YouLaser MT	CO ₂ / GaAs	10,600 nm / 1540 nm	30 W / 8 W	0.25 – 20 ms / 1 – 20 ms	Exclusive Mixed Technology delivers two wavelengths sequentially or simultaneously. Scanner area 1.8 x 1.8 cm (max), 300 µm microspot (10,600 nm) and 350 µm microspot (1540 nm). Stacking Pulse technologies deliver short and repeated pulses. DivaTight option for vaginal and vulvar treatments. Various surgical handpieces available. Option for ablative fractional resurfacing treatments. Spot size up to 8 mm. Available for all laser systems equipped with a TWAIN Universal Connector.
TWAIN 2940	Er:YAG	2940 nm	Up to 100 J/cm ²	0.3 – 1 ms	Peak power up to 0.8 GW at 532 nm and 1.8 GW at 1064 nm. Exclusive Pico-Boost technology (patent pending) allows emission in pico, nano or micro seconds. OptiBeam II technology for fractional, squared and round flat top spots up to 8 mm. Twain options available.
Discovery Pico	Pico-second Nd:YAG	532 nm / 1064 nm	0.3 J (ps), 0.4 J (ns) / 0.8 J (ps / ns), 2 J (µs)	370 ps, 6 ns, 6+6 ns / 450 ps, 6 ns, 6+6 ns, 300 µs	Q-switched Nd:YAG 532 nm, 1064 and Ruby 694 nm, with OptiBeam II handpieces for fractional, squared and round flat top spot sizes up to 8 mm; rep. rate up to 10 Hz at 532 / 1064 and up to 3 Hz at 694 nm. TWAIN options available. Q-Plus Evo models: Q-Plus A (Nd:YAG 532 / 1064 nm); Q-Plus C (combined Nd:YAG 532 / 1064 and Ruby 694 nm); Q-Plus R (Ruby 694 nm).
Q-Plus Evo	Nd:YAG Q-Switched / KTP Nd:YAG Q-Switched / Ruby Q-Switched	1064 nm / 532 nm / 694 nm	Up to 37 J/cm ² (ns), 50 J/cm ² (µs) / up to 15 J/cm ² / up to 30 J/cm ² (ns), 50 J/cm ² (ms)	6 ns, 6+6 ns, 300 µs / 6 ns, 6+6 ns	
Sciton					
ProFractional Halo	Er:YAG Hybrid Fractional Laser (ablative and non-ablative)	2940 nm / 1470 nm / 2940 nm	Up to 400 J/cm ² / 150 mJ/MTZ / 50 mJ/MTZ	Variable / Up to 5 ms	Expandable module/density 1.5% to 26%. Delivery of ablative and non-ablative wavelengths in single pass. Dynamic Thermal Optimization (DTO) for precise energy delivery. Roller tip adaptors; optical navigation; integrated Zimmer cooling advanced mode for precise and independent control of depth and density. Pre-programmed modes and integrated smoke evacuation system.
Syneron					
Profound	Bipolar RF – 460, 5 kHz	N/A	Max. output voltage – 84 VRMS; 5 W per channel	N/A	Seven independent bipolar channels. Dermal: five independent pairs of bipolar microneedles; Sub-Q: seven independent pairs of bipolar microneedles.
elbs plus/eTwo Sublative Rejuvenation CO ₂ RE	Fractional Bipolar RF	N/A	Up to 100 mJ/pin / up to 62 mJ/pin	N/A	elbs: 64/44 pins. eTwo: standard 64 pin tip with 12 x 12 mm spot. Focal 44 pin tip with 11 x 3 mm spot.
Picoway Resolve	CO ₂ Resurfacing System	10,600 nm	Up to 453 J/cm ²	0.2 – 3.0 ms	Reusable, tapered fractional and surgical Tx handpieces. Four digital super pulsed fractional treatment modes including CO ₂ RE Light, Mid, Deep and Fusion. Classical ablation and CW Surgical Mode. Two handpieces, 1064 nm and 532 nm.

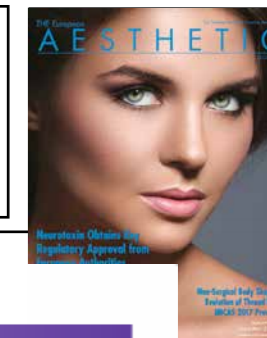
Note: Data subject to change; please refer to Company Directory for supplier contact information.



ACNE TX DEVICE COMPARISON CHART

Supplier Product Name	Device Type	Wavelength (nm)	Energy Output (Joules)	Pulse Length	Accessories
Candela Vbeam Perfecta CO ₂ RE	Pulsed Dye Laser CO ₂ Laser	595 nm 10,600 nm	Up to 40 J/cm ² Up to 80 J/cm ²	0.45 – 40 ms Up to 1100 ms	Eight spot sizes up to 12 mm, 3 x 10 elliptical and pigmented lesion handpieces. Patented Dynamic Cooling Device maximizes patient comfort and Tx efficacy. Multi-use CO ₂ RE Aesthetic and surgical handpieces; sterile single-use internal and external CO ₂ RE Intima handpieces.
DEKA SmartXide DOT SmartXide ² DOT/RF	Fractional CO ₂ Fractional CO ₂ plus RF	10.6 µm 10.6 µm	50 W max. 300 W max.	80 – 200 µs 80 – 100 µs	DOT Scanner; freehand handpiece; touchscreen; Stack feature; Smart Track delivery; Smart Pulse; database; CW, PW, fractional and fractional scanning modes available. PSD technology; selectable pulse shape (SP, DP, LP, HP, PW, CW, traditional and fractional scanning modes available); DOT/RF scanner with RF feature; freehand; TFT touchscreen; Stack and Smart Track delivery modes; built-in training videos; database. Store user protocols. Optional diode laser module, 180 W Nd:YAG laser module; up to 27,000 W pulse peak power; three delivery pulse designs; 11 handpieces (22 and 24 mm available); optional five filter IPL with enhanced vascular capabilities 500G. Auto Spot Size Recognition. Top Hat technology; contact or optional external cooling connections; database and protocols; no disposables.
Synchro HP Excellium Synchro FT Synchro REPLA:Y	Multi-Functional Platform Multi-Functional Platform Multi-Functional Platform	1064 nm Nd:YAG / 500 nm, 520, 550, 600, 650 nm IPL 1064 nm Nd:YAG / 500, 520, 550, 600, 650 nm IPL 755 nm Alexandrite / 1064 nm Nd:YAG / 500, 520, 550, 600 nm IPL	LP 120 J – 180 W (max.) SP 120 J (max.) / 180 J (max.) energy per pulse 700 J/cm ² (max.) SP and LP / 160 J (max.) energy / pulse 63.5 J (max.) – 125 W (max.) / 120 J (max.) SP / 160 J (max.) energy/pulse	2 – 50 ms SP; 0.2 – 10 ms LP / 3 – 8 ms 0.8 – 10 ms SP; 2 – 30 ms LP (1 – 3 pulses) / 3 – 8 ms 2 – 50 ms (single pulse), 2 – 40 ms (double pulse) / 2 – 50 ms SP; 0.2 – 12 ms LP / 3 – 8 ms	180 W Nd:YAG laser module; up to 27,000 W pulse peak power; three delivery pulse designs; 11 handpieces (22 and 24 mm available); optional five filter IPL with enhanced vascular capabilities 500G. Auto Spot Size Recognition. Top Hat technology; contact or optional external cooling connections; database and protocols; no disposables.
Elipse A/S Nordlys Elipse MultiFlex ⁺ Sirius Elipse IPL ⁺	Multi-Technology Platform Multi-Technology Platform Selective Waveband Technology (SWT) SWT	530 – 750, 555 – 950 nm 530 – 750 nm 530 – 750 nm 530 – 750 nm	Up to 19 J/cm ² Up to 19 J/cm ² Up to 12 J/cm ² Up to 19 J/cm ²	0.5 – 100 ms (programmable) Up to 100 ms (ack.) (programmable) 2.5 ms Up to 100 ms (ack.) (programmable)	All systems use SWT with dual mode fiber, programmable pulse technology and database. IPL+, MultiFlex+ and Nordlys offer expert adjustment of pulse times and Nordlys offers unique sub-millisecond SWT pulse and fractional laser (Frax 1550) for Tx of acne scars. See above.
Eunsung Global Corp. Clearlight	Intense Pulsed Light	430 – 1200 nm	3 – 35 J/cm ²	5 – 25 ms	Differentiated handpiece of 15 x 40 mm wide spot size.
Fotona d.o.o. SP Dynamis XS Dynamis QX MAX	Nd:YAG / Er:YAG Er:YAG Nd:YAG Q-Switched / Long Pulse	1064 nm / 2940 nm 2940 nm 1064 nm	Up to 600 J/cm ² Up to 500 J/cm ² Up to 160 J/cm ²	0.1 – 50 ms 0.1 – 1.5 ms 250 µs Accelera Pulse	F-Runner, fractional Er:YAG scanner: 250 µm spot size, 168 mm ² Tx area. S-Runner, Er:YAG scanner: 4 mm spot size, 16 cm ² Tx area. S-11: Nd:YAG scanner: 42 cm ² Tx area. Er:YAG handpieces: 0.25 – 12 mm spot sizes; Nd:YAG handpieces: 2 – 20 mm spot sizes. F-Runner, fractional Er:YAG scanner: 250 µm spot size, 168 mm ² Tx area. S-Runner, Er:YAG scanner: 4 mm spot size, 16 cm ² Tx area. Er:YAG handpieces: 0.25 – 12 mm spot sizes. Handpieces: 2 – 8 mm spot sizes.
General Project Med Flash II CS	Pulsed Light	390 – 1200 nm	Up to 600 J at lamp level	Single pulse: 25 – 75 ms, Pulsed mode: 1.5 – 12.5 ms (duration), 5 – 100 ms (interval)	Handpiece with integrated skin cooling. Partial spectrum lamp with dedicated filter. Spot sizes: 50 x 25 mm, 35 x 15 mm.
Hironic Co., Ltd. MIRACLEAR	Blue Light, Vacuum, IPL	400 – 1200 nm	2 – 11 J/cm ²	3 – 25 ms	Small tip: 14.5 x 12.3 mm; normal tip: 26.5 x 14.5 mm.
Ilooda Co., Ltd Secret RF Fraxis DUO Fraxis	RF Microneedle CO ₂ Fractional / RF Microneedle CO ₂ Fractional	N/A 10,600 nm 10,600 nm	25 W 30 W / 20 W 30 W	50 – 950 ms 0.02 – 5 ms / 50 – 950 ms 0.02 – 5 ms	25 pin sterilized RF bipolar tips (optional 64 insulated pin available); monopolar handpiece for small Tx areas; optional smart pen handpiece. RF fractional needle; CO ₂ fractional and optional surgical handpieces. CO ₂ fractional and optional surgical handpieces.
LINLINE Medical Systems SAS MULTILINE	Nd:YAP / Q-Switched	1079 nm	Up to 360 J/cm ²	5 ns – 5 ms	Spot sizes: 3, 4, 8 mm. Touchscreen monitor. Non-thermal laser impact eliminates cooling feature. Integrated universal power and control system; interchangeable compact laser emitters.
Novaelecty, Novacnical (divisions of Novavision Group) RADIO4M PLW IFL	Dynamic Quadrupolar RF, RF Safety System, Variable RF, Quadrupolar Dynamic Fractional RF Inherent Fast Light	N/A 400 – 950 nm	Up to 55 W Up to 100 J	N/A 20 – 40 ms	Movement sensors, pyrometric temperature detectors, four handpieces: small, medium, large and 4RPH technology with 32 golden pins and 384 µNeedles; Biofeedback. Interchangeable filters: 400, 520, 550, 600, 650 and 720 nm; biocompatible disposable filters; Subburst: single, repetition, IFL modes.
Quanta System Eterna GoxiNezza Plus New Silk Light (table top) TWAIN IPL option TWAIN 29-40 Youlaser CO ₂ Youlaser MI	Pulsed Light Pulsed Light Pulsed Light Pulsed Light CO ₂ CO ₂ / GaAs	400 – 1200, 625 – 1200 nm 400 – 1200 nm 400 – 1200 nm 2940 nm 10,600 nm 10,600 nm / 1540 nm	Up to 30 J/cm ² Up to 25 J/cm ² Up to 30 J/cm ² Up to 95 J/cm ² 30 W 30 W / 8 W	3 – 240 ms 3 – 240 ms 3 – 240 ms 0.3 – 1 ms 0.25 – 20 ms 0.25 – 20 ms / 1 – 20 ms	IPL handpieces: 400 - 1200, 550 - 950, 570 - 1200, 590 - 1200, 625 - 1200 and 650 - 1200 nm. Spot sizes: 48 x 13 or 25 x 13 mm. Skin cooling. TWAIN IPL pulsed light option available for all systems with TWAIN Universal Connector. Option for ablative fractional resurfacing treatments available for all systems with TWAIN Universal Connector. Scanner area 2.1 x 3.1 cm (max.), 200 µm microspot. Surgical handpieces available. Mixed technology delivers two wavelengths sequentially or simultaneously. Scanner area 1.6 x 1.8 cm (max.), 300 µm (10,600 nm) and 350 µm microspots (1540 nm). Stacking Pulse technologies deliver very short and repeated shots. Surgical handpieces available.
Seiton JOULE ThermaScan BBL BBL	Laser and Light Platform Nd:YAG BroadBand Light BroadBand Light	Various 1319 nm 420 – 1400 nm 420 – 1400 nm	Up to 400 J/cm ² Up to 200 ms Up to 30 J/cm ² Up to 30 J/cm ²	0.1 – 200 ms, 1 – 10 sec Up to 200 ms Up to 200 ms Up to 200 ms	Configurable up to ten modules. Computerized scanner; 30 x 30 mm Tx; integrated cooling. Table top system. SkinType II, 420, 515, 560, 590, 640, 685 nm filters, 15 x 45 mm and 15 x 15 mm spot sizes, integrated cooling. SkinType II, 420, 515, 560, 590, 640, 685 nm filters, 15 x 45 mm and 15 x 15 mm spot sizes, integrated cooling.
Syneron eMaxLight AC e6s Plus	Optical Energy / RF Electrical Energy Optical Energy / Bi-polar RF	400 – 980 nm 400 – 980 nm	Up to 18 J/cm ² / up to 25 J/cm ² Up to 18 J/cm ²	N/A N/A	25 x 12 mm spot size. 25 x 12 mm spot size.

Note: Data subject to change; please refer to Company Directory for supplier contact information.



EMERGING AESTHETIC TECHNOLOGIES COMPARISON CHART

Supplier	Product	Technology	Applications
BTL Industries	BTL Intima	Monopolar RF; EFC Elite	Non-invasive labia remodeling. Vaginal rejuvenation and tightening with no downtime. Clinically proven improvement of sexual satisfaction.
CROMA-Pharma GmbH	LFL PDO	Absorbable polydioxanone threads	Elimination of fine wrinkles, smoothing deep wrinkles, improvement of skin tone, elasticity and texture, delay of aging process and prevention of skin sagging.
Cynosure	SculpSure	1060 nm Wavelength with Four Individual Applicators and Customizable Attachment System	Non-invasive body contouring; 1060 nm wavelength disrupts subcutaneous fat through a proprietary energy delivery system; contour pockets of bothersome fat in areas such as the flanks and abdomen; minimal absorption in the dermis; can be used on all skin types.
DEKA	MonaLisa Touch	SmartXide ² with Hi Scan V2LR Scanning; Fractional CO ₂ with PSD	Feminine rejuvenation - restore natural physiological and mechanical mucosa conditions; Improve reduced vaginal lubrication, vulvar itching and painful intercourse.
Eunsung Global Corp.	Dr.Skin OctoLine2 AquaClean Beauty Heart Spring Hydra Beauty Jet Clear Smartline EPN	Electroporation, Microdermabrasion, Vacuum; 27 W; 2.600 ms Ultrasound, Water Jet Peel; 2.6 W; 20 – 100 ms Aqua Peeling Electroporation; 0.04 – 0.4 ms Electroporation, Cryoelectroporation; 680 ms Multi-Polarity Electroporation, Aqua Peeling Water Jet Peel Electroporation, Iontophoresis, Ultrasound, Cryo Microneedling, Electroporation (0 – 2 mm needle penetration depth)	Skin rejuvenation and acne treatment. Skin rejuvenation and acne treatment. Skin rejuvenation and acne treatment. Skin rejuvenation and acne treatment. Skin rejuvenation and acne treatment. Acne treatment. Skin rejuvenation. Skin rejuvenation and acne treatment.
Fotona d.o.o.	IntimaLase	2940 nm Er:YAG with SmoothMode	Feminine rejuvenation - tightening of internal vaginal tissues.
General Project	Thermal Therapy Physio Vag	Bipolar/Monopolar RF	Vaginal tightening, external vaginal aging, vaginal dryness, bladder leakage, vaginal prolapse.
Ilooda Co., Ltd.	Gynolaser Handpiece	CO ₂ Fractional; 10,600 nm; 30 W; 0.02 – 5 ms	Vaginal tightening and urinary incontinence.
LINLINE Medical Systems SAS	RecoSMA	Laser Induced Acousto-Interferential Exposure	Skin rejuvenation, anti-aging, face-lifting, skin tightening, scar treatment (stretch marks, acne scars, keloids, hypo / normal / hypertrophic scars), psoriasis treatment, stimulation of new tissue generation, skin resurfacing, ulcer and wound healing.
Miramir	miraDry	Microwave Energy	Permanent reduction of underarm sweat. Permanent reduction of underarm hair of all colors.
Novacnical, a division of Novavision Group	EVA (Enhancer of Vaginal Anatomy) Radio4M	Vaginal Dynamic Quadrupolar RF (VDR), RF Safety System (RSS), Internet of Medical Things (IoMT) Patented Dynamic Quadrupolar RF, RSS, Variable RF (VRF), Quadrupolar Dynamic Fractional RF (4RPH)	Vaginal atrophy, laxity of vaginal introitus, vulvodynia, stress urinary incontinence, vulvar rejuvenation. Face-lifting, facial wrinkles, neck wrinkles, eye and lip wrinkles, chin shaping, dermo-peeling, hyperpigmentation, acne, resurfacing, hand rejuvenation, stretch marks, localized lipolysis, body firming.
PerfAction Technologies, Ltd.	Enerjet and Enerjet 2.0	Jet Volumetric Remodeling (JVR)	Kinetic lifting, skin regeneration, skin tightening, scar repair: acne scars, keloid and hypertrophic scars, stretch marks, neck lines, dermal thickening and décolleté wrinkle reduction.
Quanta System	Discovery Pico DivaTight	Picosecond Nd:YAG 532 nm / 1064 nm; up to 1.8 GW peak power; Pico-Boost Technology; OptiBeam II Fractional combined GaAs 1540 nm and 10,600 nm CO ₂	Tattoo removal, benign pigmented lesions and skin rejuvenation. Feminine rejuvenation – vaginal mucosa atrophy, vulvar resurfacing.
Sinclair Pharma	Silhouette Soft by Vaupell	Poly-L-lactic Acid Resorbable Suture with Bi-Directional Cones (8 cone, 12 cone, 16 cone sutures)	Facial definition, wrinkle reduction, volume repositioning and collagen regeneration.
STORZ MEDICAL AG	CELLACTOR ultra D-ACTOR ultra	Acoustic Wave Therapy (AWT)	Cellulite treatment, body shaping and skin rejuvenation.
Syneron	Picoway	532 nm, 1064 nm, Short Picosecond Pulses	Pigmentation, skin irregularities, signs of aging and tattoo removal.
Thermi	Thermi250	Temperature Controlled RF	Temporary reduction of cellulite.
Ulthera, Inc., a division of Merz, Inc.	The Ulthera System Cellfina System	Micro-Focused Ultrasound with Visualization Tissue Stabilized-Guided Subcision (TS-GS)	Neck, chin and brow lifting; chest wrinkles. Long-term reduction of cellulite, up to two years by precise release of targeted structural tissue (fibrous septae).
Viveve, Inc.	Viveve System	Cryogenically-Cooled Monopolar RF	Womens' health and sexual function.

Note: Data subject to change; please refer to Company Directory for supplier contact information.

NOVACLINICAL

advanced medical device applications



A division of

NOVATION GROUP SPA
20826 Misinto (MB) - Milan - Italy - via dei Guasti, 29
tel. +39 02 96720240 - fax +39 02 96720232
www.novaclinical.it